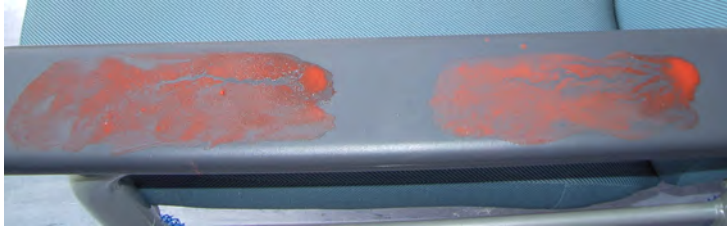
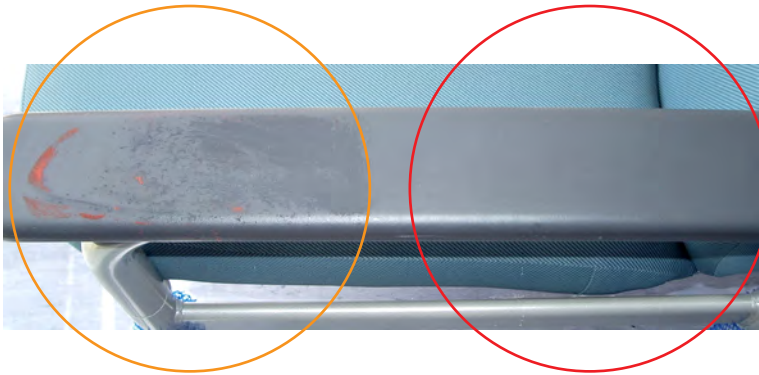


# Cleaning Comparison

PRE-WET WIPES V WET & DRY

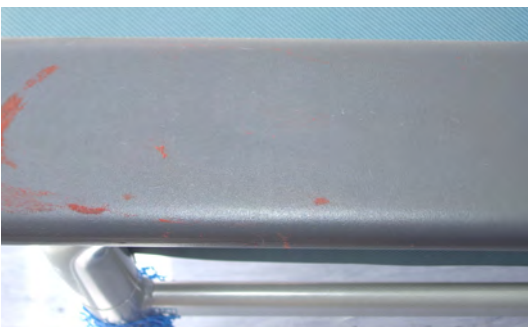


1. A solution of Browne's Test Soil was applied to the vinyl arm rest of a chair.
2. The contamination on the left was cleaned using a pre-wet wipe.
3. The contamination on the right was cleaned by firstly applying RediClean to soften & suspend bio-soil, followed by drying clean with Mediclean.



Note residual bio-soil & moisture after cleaning with pre-wet wipe

Clean & dry using RediClean & Mediclean



**Pre-wet wipes leave the surface with a damp film of diluted contamination.**

**Surface Moisture = Surface Contamination**



**RediClean/Mediclean combination leaves the surface clean & dry**

**Wipe Dry = Wipe Clean**

**WHEN IS CONVENIENCE MORE IMPORTANT THAN INFECTION CONTROL?**

© Copyright 2006 -Majac Medical Products Pty Ltd

[www.majacmedical.com.au](http://www.majacmedical.com.au)

Tel: 1300 138 578 Fax: 1300 138 612



# CLEANING FOR INFECTION CONTROL

## Some hints on effect surface cleaning

- To clean a surface properly you should wet the surface with a clinical detergent then dry with a low lint cloth.

The Clinical Detergent will solubilise the Bio-soil (protein) and the cloth will remove the Bio-film.

- Pre-wet detergent wipes are not effective. They merely dampen the surface with water.
- Pre-wet (Pop up type or single pack) disinfectant wipes are not effective at all.
- All surfaces in the medical practice should be cleaned by wetting the surface with a mildly alkaline Clinical Detergent and then wipe with an absorbent “low lint” disposable towel.
- Do not use pre wet wipes or disinfectants that may damage the plastic or vinyl.

*Refer CRA report: “Performance characteristics of Surface Disinfectants”*

- *Do not clean with a disinfectant, most will just harden the protein on to the surface.*
- *Always clean with a Clinical Detergent then wipe the surface dry.*

## Pre-wet Wipes are NOT designed to DRY the surface

- Wet Wipes Transfer some liquid to the surface where it dilutes the Contaminating Bio-soil. However
- A diluted film of liquid containing bio-soil& micro-organisms will be left on the surface.

## WIPE DRY = WIPE CLEAN

Extensive Testing carried out by Du Pont on the  
“Wet Particle Removal Ability”  
Published in their Technical Information states:

“...wipers made from fabrics that have an exceptional ability to ‘wipe the surface dry’ leave the surface cleaner than those which do not, since the residual contamination resulting from a spill always lies suspended in the liquid phase left behind on the wiped surface.”

## Apply & Wipe Using the Perfect Surface Cleaning Partners

*The best method of cleaning environmental surfaces is to apply a mild clinical detergent to loosen, dissolve & suspend contaminating soil, then Wipe it off with a highly absorbent, low lint disposable cloth.*

### RediClean

Medical & Dental Surface & Equipment  
Cleaning Solution



- AS/NZS 4187 & 4815 compliant
- RediClean is ready to use
- No Measuring
- No Mixing
- It's that simple

RC-500S (6 pack complete with 6 mist free applicators)  
RC-500R (refill - pack of 6, no applicators)

### MediClean

Sontara

Only by DuPont



- MediClean Towels
- Soft & highly absorbent
- Low lint
- High wet strength

Low lint  
performance

Order Code  
57-112 (35 x 30cm Towel x 100/Box)  
57-113 (35 x 60cm Towel x 100/Box)